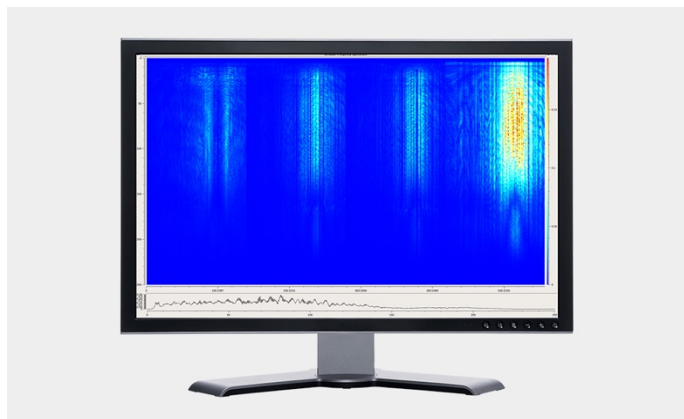


Data Management System



Data Management System

The Venator Data Management System is a highly advanced system for node logistics, node communications, data QC in real-time during data download, and surveillance of computers and other hardware.

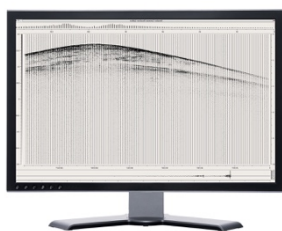
The system operates automatically up to nav-merged SEG-Y. Hardware and software are scalable to handle any node counts. A database collects all node history for the lifetime of the node.

The system can be adapted to any node solution, but the functionality will depend on the nodes used. Contact us for more information.

Main modules

- **Node communicator**
Node configurations, Data download & initial QC, Clock management, Battery management and Self-tests (parallel processes)
- **Data QC (GIS interface)**
Automatic QC during data down-load and an enhanced QC tool for manual QC via the GIS interface
- **Node logistics (web interface)**
Keeps track of node locations on seabed and onboard the vessel as well as controlling nodes to be deployed
- **Transcriber**
Nav-merge, SEG formatting and disc or tape storage

Example QC displays



Wiggle trace



GIS plot (shot energy)



Docking Area